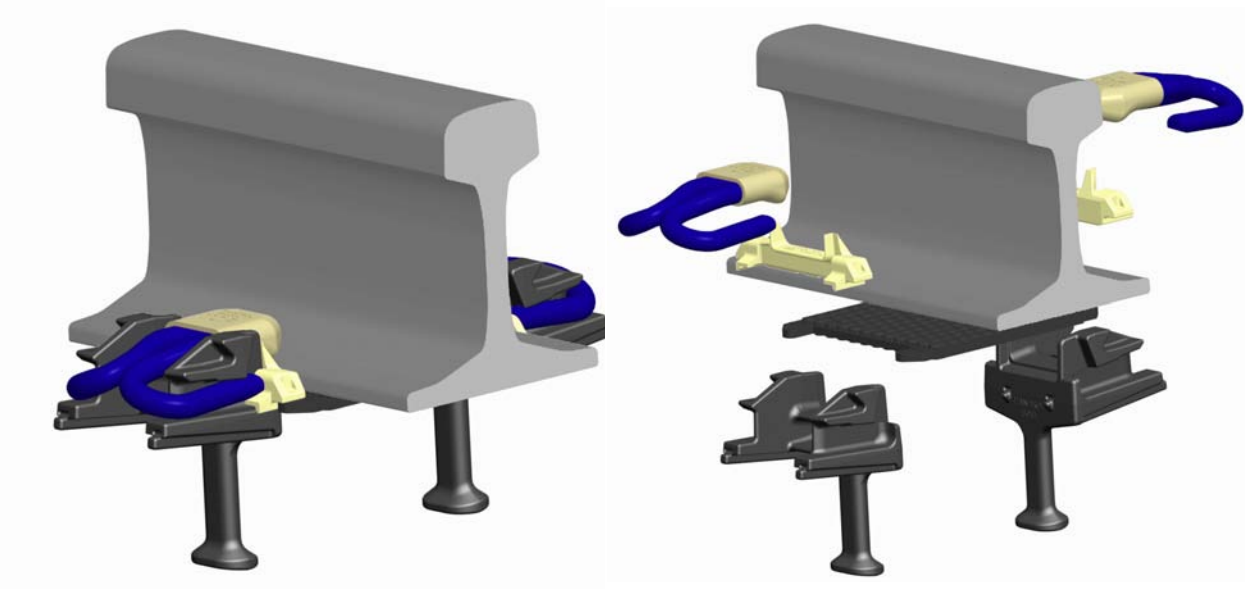


FOR BALLASTED TRACK PANDROL PRESENTS:

# FASTCLIP FC 1500 / 1600



## INSTALLATIONS



## FEATURES AND BENEFITS

The Pandrol FASTCLIP FC system is designed for all categories of track, and specifically engineered to be capable of rapid installation by mechanised equipment.

The FASTCLIP FC product has substantial global references on both concrete and steel applications.

FASTCLIP FC is a threadless Fastening, with low maintenance and pre-assembly of the fastening which remains captive on the sleeper.

- **Rapid installation capability (up to 70 sleepers per minute)**
- **Pre-assembly and captive on sleeper**
- **Threadless, self tensioned fastening**
- **Suitable for all track categories**

### TYPICAL PERFORMANCE RANGE

	FC 1500	FC 1600
<b>Nominal Toe Load</b> In clip driving fixture	1000kgf	1250kgf
<b>Clamping Force</b> EN 13146-7:2012	> 16 kN	> 20 kN
<b>Creep Resistance</b> EN 13146-1:2012	> 7 kN	> 9 kN
<b>Electrical Resistance</b> EN 13146-5:2012	> 5 kΩ	> 5 kΩ

### SUITABLE FOR APPLICATION

- Concrete Sleeper
- Steel Sleeper Assemblies
- Timber Sleepers (on Baseplates)
- Switches and Crossing
- Joint Bar Assemblies
- Rail Free (ZLR) Assemblies

For special applications consult PANDROL

## RECOMMENDATIONS FOR BALLASTED TRACK

FASTCLIP FC 1500 / 1600		OPERATING CONDITIONS					GENERAL SUITABILITY				
CEN / CAT	Typical Operation	Typical Rad	Min Rad	Typical Axle	Max Axle	Max Speed	Rail Pad Resilience				
		(m)	(m)	(kn)	(kn)	(kph)	Very Stiff	Stiff	Med	Soft	Very Soft
A	Industrial / Light Urban / Tram	80	40	100	130	100	✓	✓	✓	✓	
B	Industrial / Light Urban / Metro	100	80	160	180	140	✓	✓	✓	✓	
C	Main Line Operation	400	150	225	260	250	✓	✓	✓	✓	
D	ML Large Curved (inc. High Speed)	800	400	180	260	250	✓	✓	✓	✓	✓
E	Passenger & Heavy Freight	150	150	300	350	200	✓	✓	✓		
> E	Very Heavy Haul Freight	150	150	350	400	120	✓	✓			

For guidance only. All applications differ. Please consult Pandrol for recommendations specific to your project.

✓ Fastclip FC 1600 only